

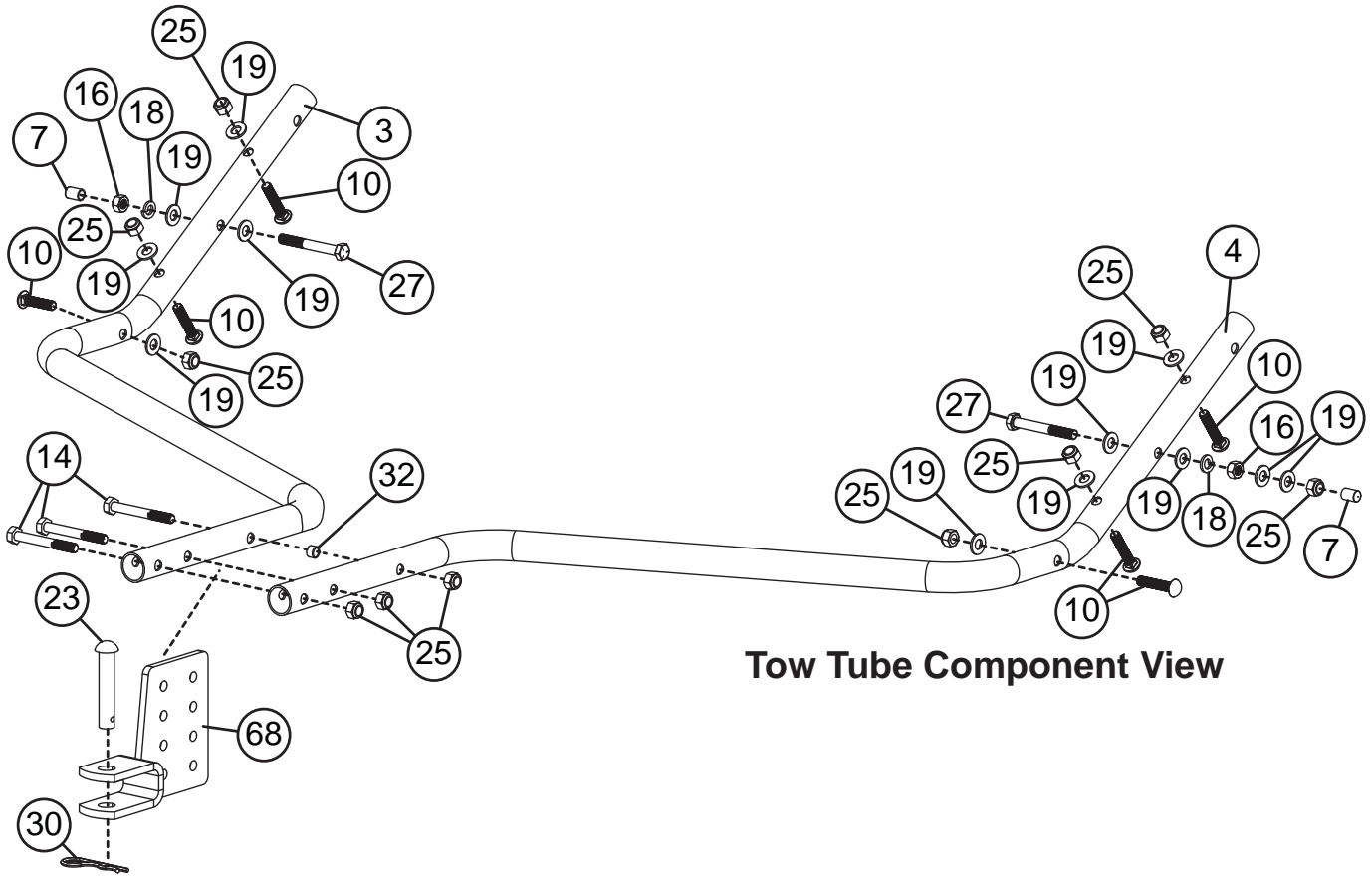
COMPONENT VIEW AND REFERENCE LIST

| REF | PART NO. | DESCRIPTION | QTY | REF | PART NO. | DESCRIPTION | QTY |
|-----|------------|-----------------------------------|-----|-----|---------------|------------------------------|-----|
| 1 | 1008953-10 | Lock Arm | 1 | 45 | 1008986-10SER | Brush Housing | 1 |
| 2 | 1008958-10 | Height Adjustment Handle | 1 | 46 | 1008987 | Wheel | 2 |
| 3 | 1008960-10 | Tow Tube, Right | 1 | 47 | 1008992-10 | Hamper Stop | 1 |
| 4 | 1008961-10 | Tow Tube, Left | 1 | 48 | 11M0808P | 1/4" x 1/2" Carriage Bolt | 6 |
| 5 | 1008962-10 | Hamper Mount | 2 | 49 | 50M0624P | 3/16" x 1-1/2" Cotter Pin | 4 |
| 6 | 1008965 | 5/16" x 1" Spacer | 2 | 50 | B-4768 | 5/8" Machine Bushing | 4 |
| 7 | 1009047 | Vinyl Bolt Cap | 2 | 51 | B-5924 | Brinly Decal | 1 |
| 8 | 1009058 | Vinyl Grip | 1 | 52 | B-7063 | Caution Label | 1 |
| 9 | 11M1020P | 5/16" x 1-1/4" Carriage Bolt | 1 | 53 | F-577 | 5/8" E Ring | 6 |
| 10 | 11M1024P | 5/16" x 1-1/2" Carriage Bolt | 6 | 54 | L-1744 | Label, Serial No | 1 |
| 11 | 20M0820P | 1/4" x 1-1/4" Screw | 4 | 55 | R-2205 | Brush Section | 6 |
| 12 | 23037103 | Plug | 4 | 56 | R-2259-01 | Brush Axle | 1 |
| 13 | 2M1012P | 5/16" x 3/4" Hex Bolt | 5 | 57 | R-2261 | 1/4" x 3/4" Dowel Pin | 2 |
| 14 | 2M1044P | 5/16" x 2-3/4" Hex Bolt | 3 | 58 | R-2262 | 5/8" Large Flat Washer | 2 |
| 15 | 2M1056P | 5/16" x 3-1/2" Hex Bolt | 2 | 59 | R-2263 | 5/8" Flat Washer | 2 |
| 16 | 30M1000P | 5/16" Hex Nut | 2 | 60 | R-2281 | Brush Holder | 4 |
| 17 | 30M1200P | 3/8" Hex Nut | 2 | 61 | R-2289SER | Bearing Retainer | 2 |
| 18 | 40M1000P | 5/16" Lock Washer | 2 | 62 | R-2320 | 5/8" External Retaining Ring | 2 |
| 19 | 45M1111P | 5/16" Washer | 14 | 63 | R-2321 | Screw, Tapping, #12 X 3/8 | 4 |
| 20 | B-1673P | 1/4" Lock Nut | 10 | 64 | R-2485LH | LH Drive Pinion | 1 |
| 21 | B-1674P | 5/16" Lock Nut | 1 | 65 | R-2485RH | RH Drive Pinion (Not Shown) | 1 |
| 22 | B-1675P | 3/8" Lock Nut | 2 | 66 | R-2194-10 | Rear Hamper Tube | 2 |
| 23 | B-3861 | 1/2" X 2-1/2" Hitch Pin | 1 | 67 | R-2195 | Hamper Stop Rod | 1 |
| 24 | B-4107 | 1" Vinyl Cap | 2 | 68 | R-2251-10 | Hitch Clevis | 1 |
| 25 | B-4786 | 5/16" Nylon Lock Nut | 16 | 69 | R-2443-10 | Lower Side Tube | 2 |
| 26 | 1009205 | Grip | 1 | 70 | R-2307 | Spring Rod (STS-427LXH) | 2 |
| 27 | B-4868 | 5/16" x 2-1/2" Hex Bolt | 2 | | | | |
| 28 | B-5650 | 5/16" Star Lock Washer | 1 | | | | |
| 29 | B-983 | 0.08" Hairpin Cotter | 2 | | | | |
| 30 | D-146P | 1/8" Hairpin Cotter | 1 | | | | |
| 31 | F-782 | 5/16" Knob | 1 | | | | |
| 32 | R-1141-01 | Frame Spacer | 1 | | | | |
| 33 | R-2303 | 5/16" X 1-3/8" Clevis Pin | 2 | | | | |
| 34 | R-618 | Large Washer | 3 | | | | |
| 35 | 1008997SER | Pull Handle | 1 | | | | |
| 36 | 1009049 | Adhesive Hook and Loop | 1 | | | | |
| 37 | 1009639 | Rope, Pull, Hamper | 1 | | | | |
| 38 | 1009042-10 | Upper Side Tube (STH-420BH) | 2 | | | | |
| 38 | R-2300-10 | Upper Side Tube (STS-427LXH) | 2 | | | | |
| 39 | 1009044 | Spreader Bar Assembly (STH-420BH) | 2 | | | | |
| 40 | 1009045 | Hamper (STH-420BH) | 1 | | | | |
| 40 | R-2426 | Hamper (STS-427LXH) | 1 | | | | |
| 41 | 1009046 | Adjustment Label | 1 | | | | |
| 42 | 1008955 | Dust Cover | 2 | | | | |
| 43 | 1008957-10 | Lower Pivot | 1 | | | | |
| 44 | 1008959-01 | Wheel Axle | 2 | | | | |

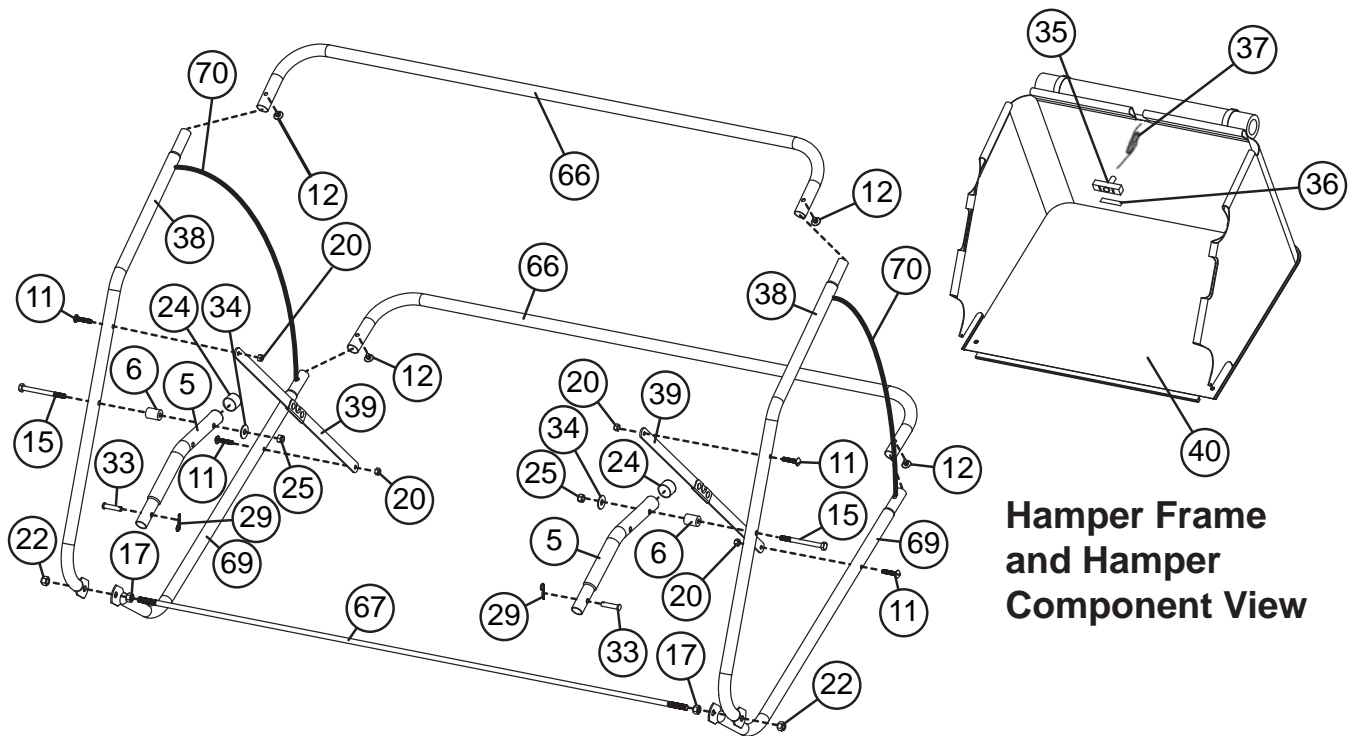
Tools Required for Assembly:

- 1/2" Wrench (2)
- 9/16" Wrench (2)
- 7/16" Wrench (1)
- Flat Tip Screw Driver (1)
- Pliers
- Gloves

COMPONENT VIEW AND REFERENCE LIST



Tow Tube Component View



**Hamper Frame
and Hamper
Component View**

COMPONENT VIEW AND REFERENCE LIST

Brush Housing Component View

