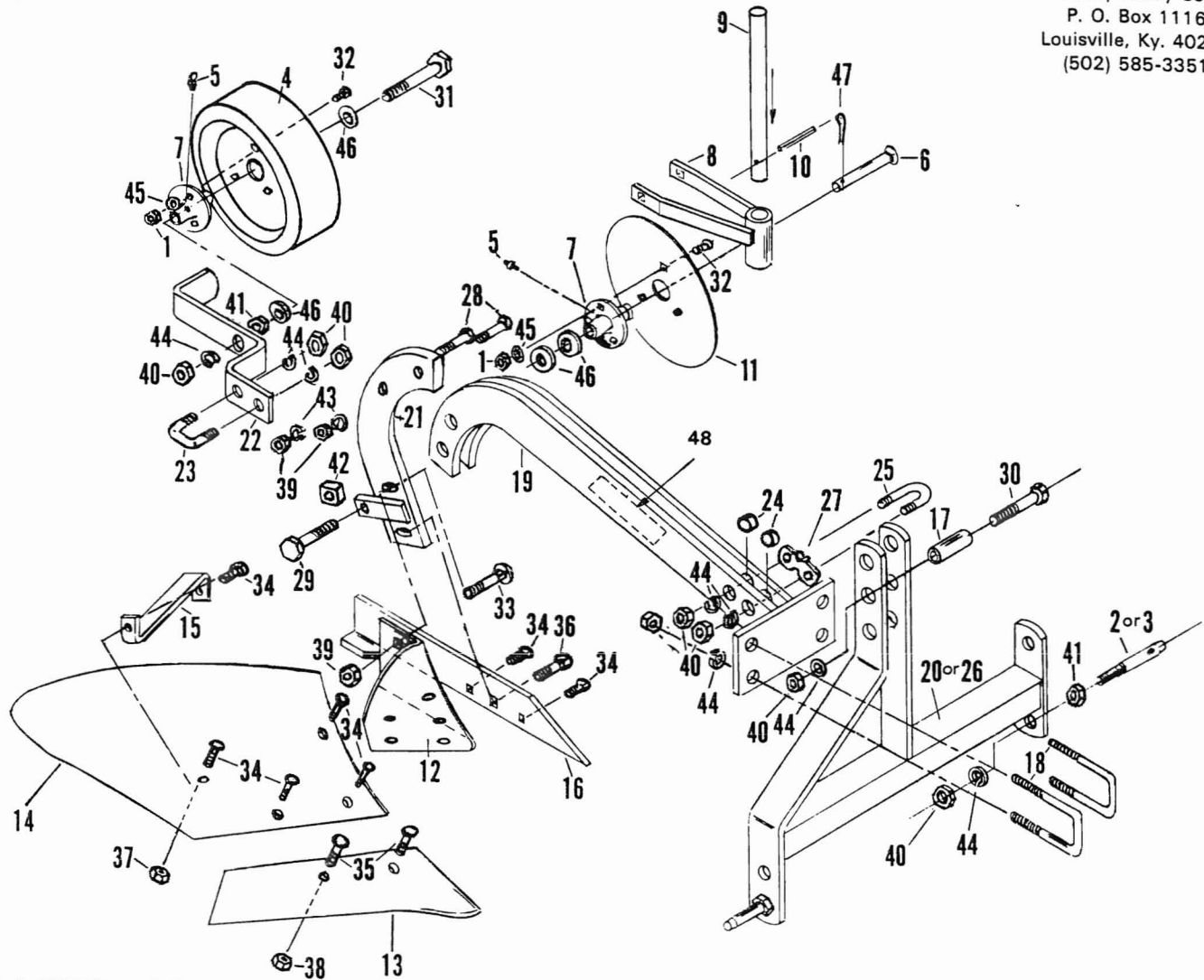


12" moldboard plow
PP-1200

TO ORDER PARTS:
Brinly-Hardy Co.
P. O. Box 1116
Louisville, Ky. 40201
(502) 585-3351



PARTS LIST

REF.

REF. NO.	PART NO.	DESCRIPTION
1	B-1674P	Nut, hex lock, 5/16"
2	B-724P-01	Pin, lower link (PP-1200)
3	B-2022P-01	Pin, lower link (PP-1230)
4	C-264-10	Gauge wheel
5	D-128P	Lube fitting, 5/16"
6	P-172P	Carriage bolt blank, 5/8"
7	P-250 A	Hub
8	P-265-10	Fork assembly
9	P-269-10	Coulter standard
10	P-270	Drive pin, 5/16"
11	P-272-10	Coulter blade
12	P-273	Frog
13	P-276	Share, 12"
14	P-279	Moldboard, 12"
15	P-285-10	Brace, moldboard
16	P-287-10	Landside assembly
17	P-328-01	Spacer (bushing)
18	P-330P	"U" bolt, (long)
19	P-331-10	Beam assembly
20	P-335-10	Mast assembly (PP-1200)
21	P-340-10	Standard
22	P-343-10	Mounting bracket - gauge wheel
23	P-367P	"U" bolt, (short)
24	P-370P-01	Beam spacer (bushing)

REF.

REF. NO.	PART NO.	DESCRIPTION
25	P-372P	"U" bolt, coulter
26	P-373-10	Mast assembly (PP-1210)
27	P-387-01	Coulter clamp
28	1M1640P	Bolt, hex, 1/2" x 2 1/2"
29	1M2040P	Bolt, hex, 5/8" x 2 1/2"
30	1M2048P	Bolt, hex, 5/8" x 3"
31	1M2072P	Bolt, hex, 5/8" x 4 1/2"
32	10M1012P	Bolt, carriage, 5/16" x 3/4"
33	10M1624P	Bolt, carriage, 1/2" x 1 1/2"
34	15M1216P	Bolt, plow, 3/8" x 1"
35	15M1416P	Bolt, plow, 7/16" x 1"
36	15M1632P	Bolt, plow, 1/2" x 2"
37	30M1200P	Nut, hex, 3/8"
38	30M1400P	Nut, hex, 7/16"
39	30M1600P	Nut, hex, 1/2"
40	30M2000P	Nut, hex, 5/8"
41	31M2000P	Nut, hex jam, 5/8"
42	35M2000P	Nut, square, 5/8"
43	40M1600P	Washer, lock, 1/2"
44	40M2000P	Washer, lock, 5/8"
45	45M1111P	Washer, plain, 5/16"
46	45M2121P	Washer, plain, 5/8"
47	50M0420P	Pin, cotter, 1/8" x 1 1/4"
48	B-4685	Logo Decal