

MAINTENANCE

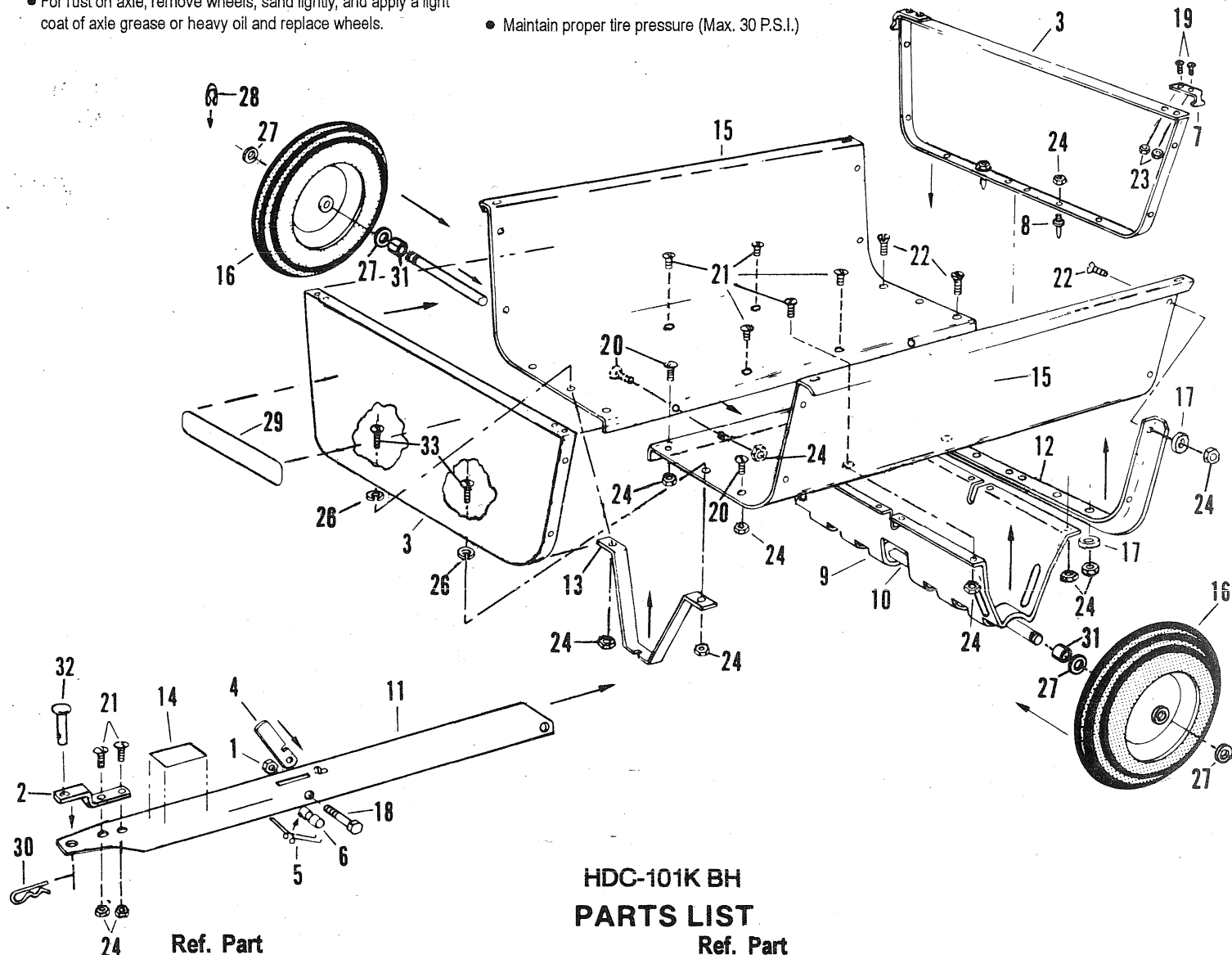
TO ORDER PARTS:

BRINLY HARDY COMPANY
 P.O. BOX 18
 JEFFERSONVILLE, IN.
 47131-0018

(877) 728-8224

NOTE: Your Utility Cart is essentially maintenance free. However, as with any steel product, it can rust.

- For rust on bed or frame parts, sand lightly and coat with enamel.
- For rust on axle, remove wheels, sand lightly, and apply a light coat of axle grease or heavy oil and replace wheels.
- Periodically grease your Utility Cart's wheels with standard axle grease.
- Periodically check tightness of all fasteners.
- For long life, store the Utility Cart in a dry area.
- Maintain proper tire pressure (Max. 30 P.S.I.)



HDC-101K BH PARTS LIST

Ref. Part No. No.	Description	Quantity	Ref. Part No. No.	Description	Quantity
1 B-1675P	Hex Lock Nut, 3/8"	1	17 R-618	Special Washer	8
2 B-3034-10	Clevis	1	18 1M1256P	Hex Head Bolt, 3/8" x 3 1/2"	1
3 B-3300-10	End Panel, F/R	2	19 20M0808P	Round Head Screw, 1/4" x 1/2"	4
4 B-3301-10	Lock Bar (Handle)	1	20 20M1008P	Round Head Screw, 5/16" x 1/2"	12
5 B-3303	Handle Spring	1	21 21M1012P	Truss Head Screw, 5/16" x 3/4"	10
6 B-3305	Handle Spacer	2	22 26M1012P	Flat Head Screw, 5/16" x 3/4"	8
7 B-5455-01	Gate Lock Bracket	2	23 B-4785	Nylon Insert Nut, 1/4"	4
8 B-3307	Gate Retainer Pin	2	24 B-4786	Nylon Insert Nut, 5/16"	34
9 B-3308-10	Axle Support Bracket	1	26 40M1000P	Lock Washer, 5/16"	2
10 B-4261	Axle	1	27 B-5606	Machine Bushing, 3/4"	5
11 B-3435-10	Drawbar	1	28 B-4305	"E" Ring, 3/4"	2
12 B-3432-10	Support Channel	1	29 B-5924	Logo Decal	1
13 B-3520-10	Lock Bracket	1	30 D-146P	Hairpin Cotter, 1/8"	1
14 B-5482	Caution Decal	1	31 B-4421	Wheel Spacer	2
15 B-3407-10	Bed Half, R/L	2	32 B-3861	Drawbar Pin, 1/2" x 2 1/4"	1
16 B-4600	Wheel	2	33 20M1016P	Round Head Screw, 5/16" x 1"	2